



Venue Specs

SALZHAUS WINTERTHUR

Concert Hall & Music Club

CAPACITY

Shows: 700 + Guests / Parties: 900

SALZHAUS ONLINE TOUR 

SOUND



Venue Specs

Salzhaus Winterthur

Untere Vogelsangstrasse 6

P.O. Box 2355

CH-8400 Winterthur

Switzerland

Engineer in Charge

Stefan Reutimann

stefan.reutimann@salzhaus.ch

Booking

Michael Breitschmid

michael.breitschmid@salzhaus.ch

Cyrill Sutter

cyrill.sutter@salzhaus.ch

Monthira Wattakawanit

monthira@salzhaus.ch

PA MAIN HALL

Tops 3 x L-acoustics ARCS per Side

Subs 6 x L-acoustics SB218

Center Fill 2 x L-acoustics 108 XT

Delayline 2 x L-acoustics MTD 112b

Backfill 4 x Kling & Freitag CA 1215

Controlled by Dolby Lake Processor LP4D12

Amped by LA 8 and Lab.Gruppen

PA INDIGO (FOYER)

Tops 2 x Kling & Freitag 1215

Subs 2 x Martin Audio DV Subs

Controlled by Dolby Lake Contour

Amped by Lab.Gruppen

FOH

FOH Desk Soundcraft VI 3000, (48 Mic, 4 AES, 16 Line-Out, 16 Line Insert Expansion)

FOH FX 1 x Eventide H 3000 (Ultra-Harmonizer)

1 x Lexicon 300 (Digital Effects System)

1 x TC 2290 (Dynamic Digital Delay)

1 x TC D-TWO (Multitap Rhythm Delay)

1 x TC M-2000 (Studio Effects Processor)

FOH Insert 1 x Drawmer DL 221 (Dual Compressor/Limiter)

2 x DBX 160XT (Compressor/Limiter)

1 x TL Audio C-1 (Dual Valve Preamp & Compressor)

1 x UREI LA-22 (Two Channel Compressor/Limiter)

SALZHAUS

**MONITORS**

Monitor Desk	Midas m32
Wedges	12 x Coda Audio CUE TWO incl. Cue Wedge
Drumsub	2 x Coda Audio GI5-SUB (Controlled and Amped by Coda Audio Linus10-C Amps)
Sidefills (only on special request)	
	2 x Martin Audio W2
	2 x L-Acoustics dV-SUB

Controlled by Dolby Lake Processor LP4D12
Amped by Martin Amps (Lab.Gruppen)

MULTICORES

40 Channel 3way Passive Split (Stageright)
40 Channel Multicore (Stageright to FOH)
10 Channel Return Multicore (FOH to Stageright)
2x Cat5e 50m (FOH to Stage)

INTERCOM

1 x ASL BS217 Masterstation (Stageright)
1 x ASL BS17 Beltpack

RISERS

Platforms	6 x Büttec 2xlm
Legs	8 x 0.2m 24 x 0.4m 16 x 0.8m 8 x 1.0m

MICROPHONES (SMALL CHANGES MAY HAPPEN FROM TIME TO TIME)

Dynamic	7 x Shure SM 58 2 x Shure Beta 58 1 x Shure Beta 58 A 5 x Shure SM 57 1 x Shure Beta 57 4 x Shure Beta 57 A 2 x Shure Beta 91 1 x Shure Beta 52 A 2 x Sennheiser MD 421 U 1 x Sennheiser MD 441 6 x Sennheiser e604 2 x Sennheiser e906 1 x Audix D1 1 x Audix D2 1 x Audix D3
----------------	--

Condenser	2 x AKG SE 300 B 2 x AKG C 460 B 2 x Audix ADX51 2 x Suter C2
------------------	--

Wireless	3x UR2/SM58 Transmitter 2x UR4D+ Dual Receiver
-----------------	---

D.I.s	3 x BSS ARI33 (Mono) 4 x Radial Pro DI (Mono) 1 x Radial Pro D2 (Stereo) 2 x Palmer Pan 04 (Stereo) some more oldschool D.I.s
--------------	---

DJ EQUIPMENT

DJ Mixer	1 x Pioneer DJM 900NXS 1 x Pioneer DJM 900NXS2
CD-Player	2 x Pioneer CDJ 2000NXS 2 x Pioneer CDJ 2000
Turntables	2 x Technics SL-1210 MK2 2 x Technics SL-1210 MK5
DJ Monitoring	2 x Martin Audio W2 2 x Martin Audio DV Sub

SALZHAUS



STAGE

Back Wall 12 x Showtec Active Sunstripe

Back 16 x Par 64 500W MFL

8 x GLP Impression X4

6 x JB P7

2 x Martin Atomic 3000

2 x ACL Group PAR 36

4 x Raylight

Mid 8 x GLP Impression X4S

3 x 500W Fresnel

Front > Stage 8 x Fresnel 1000W

6 x GLP Impression X4S

6 x Par64 500W MFL

Sides 4 x GLP Impression X4S

Front > Audience 4 x 2Lite Blinder

1 x 500W Fresnel

Add. Floor Lights 6x Robe Spider

6 x GLP Impression X4S

6 x PAR 64 Short 500W MFL

Haze 1 x Look Unique 2.1

1 x Antari HZ-500

Dimmers 4 x 12Ch LitePutter (12 freie Kanäle)

Desk Chamsys MQ100 Pro 2014

2 x Chamsys Extra Wing

1x Touch Screen 24

Add. Power 2 x 32A or 1x 32A + 2x 16A

2 free DMX-Lines Stage-FOH

**Please note: Due to low clearance, there is no truss.
All lamps are directly mounted to the wooden ceiling
and can therefore not be removed or changed.**

Hanging Backdrop

Width: 3.50 m, Height: 3 m

PARTYLIGHTS MAIN HALL

9 x Stairville MHX200ProSpot

2 x American DJ Event Bar

OUR TOY PROJECTORS

Stage front Left & Right

Acer X137WH WXGA 3700lm

Stage front center

BenQ ca. 3000lm



UNIVERSE 1

1-48: Dimmer

1-8 Fresnel Front

9-11 Par 64 Front Side

13,15,16,18,19,21,22,24 Par64 Back

25-28 Blinder

29,30 Multi Ray

31,32 ACL

45-48 Fresnel Stage

12,14, 17,20,23, 33-44 unused

49,50: Look Unique Haze/Fan

51: Antari Hazer

52: 8x GLP Impression X4, 20 Ch. Mode (Back)

1.052, 1.072, 1.092, 1.112, 1.132, 1.152, 1.172, 1.192

212: 6x JB P7, 31 Ch. Mode (Mode 2)

1.212, 1.243, 1.274, 1.305, 1.336, 1.367

398: 6x GLP Impression X4S, 18 Ch. Mode (Floor)

1.398, 1.416, 1.434, 1.452, 1.470, 1.488

UNIVERSE 2

1-8: Houselight (Dimmer)

2.001, 2.002, 2.003, 2.004, 2.005, 2.006, 2.007, 2.008

9: 10x GLP Impression X4S, 18 Ch. Mode (Front/Side)

2.009, 2.027, 2.045, 2.063, 2.081, 2.099, 2.117, 2.135, 2.153, 2.171

189: 8x GLP Impression X4S, 18 Ch. Mode (Mid)

2.189, 2.207, 2.225, 2.243, 2.261, 2.279, 2.297, 2.315

333: 2x Martin Atomic, 4 Ch. Mode

2.333, 2.337

341: 12x Showtec Active Sunstrip, 10 Ch. Mode

2.341, 2.351, 2.361, 2.371, 2.381, 2.391, 2.401, 2.411, 2.421, 2.431, 2.441, 2.451

UNIVERSE 3

1-294: 6x Robe Spider 49 Ch. Mode (Floor)

3.001, 3.050, 3.099, 3.148, 3.197, 3.246



Notable Surroundings & Directions

SALZHAUS

[Directions](#) ▶

[Online Tour](#) ▶

WINTERTHUR STATION

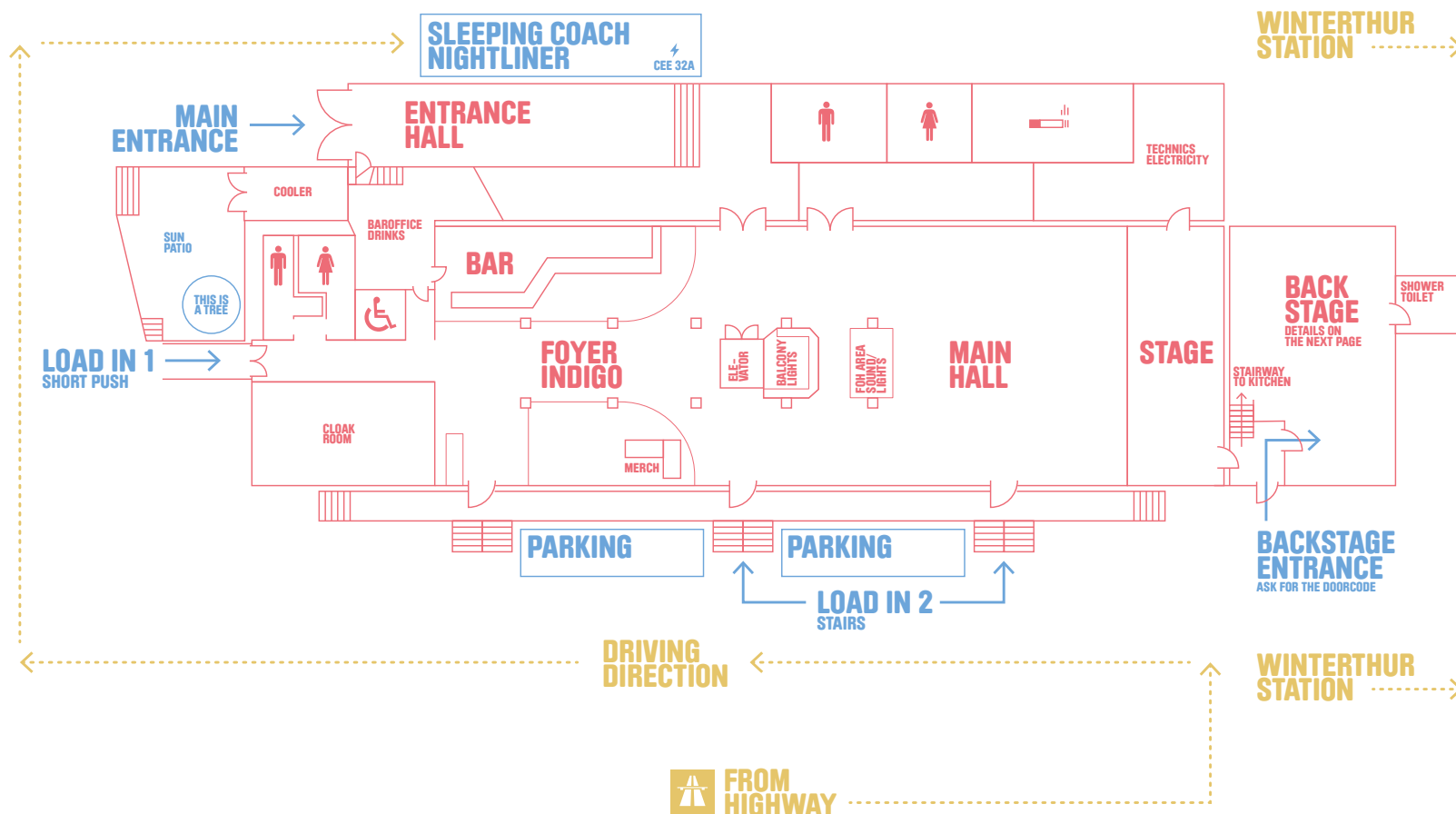
[Directions](#) ▶

PARKHOTEL BLOOM

[Directions](#) ▶

HOTEL WARTMANN

[Directions](#) ▶



SALZHAUS

BACKSTAGE

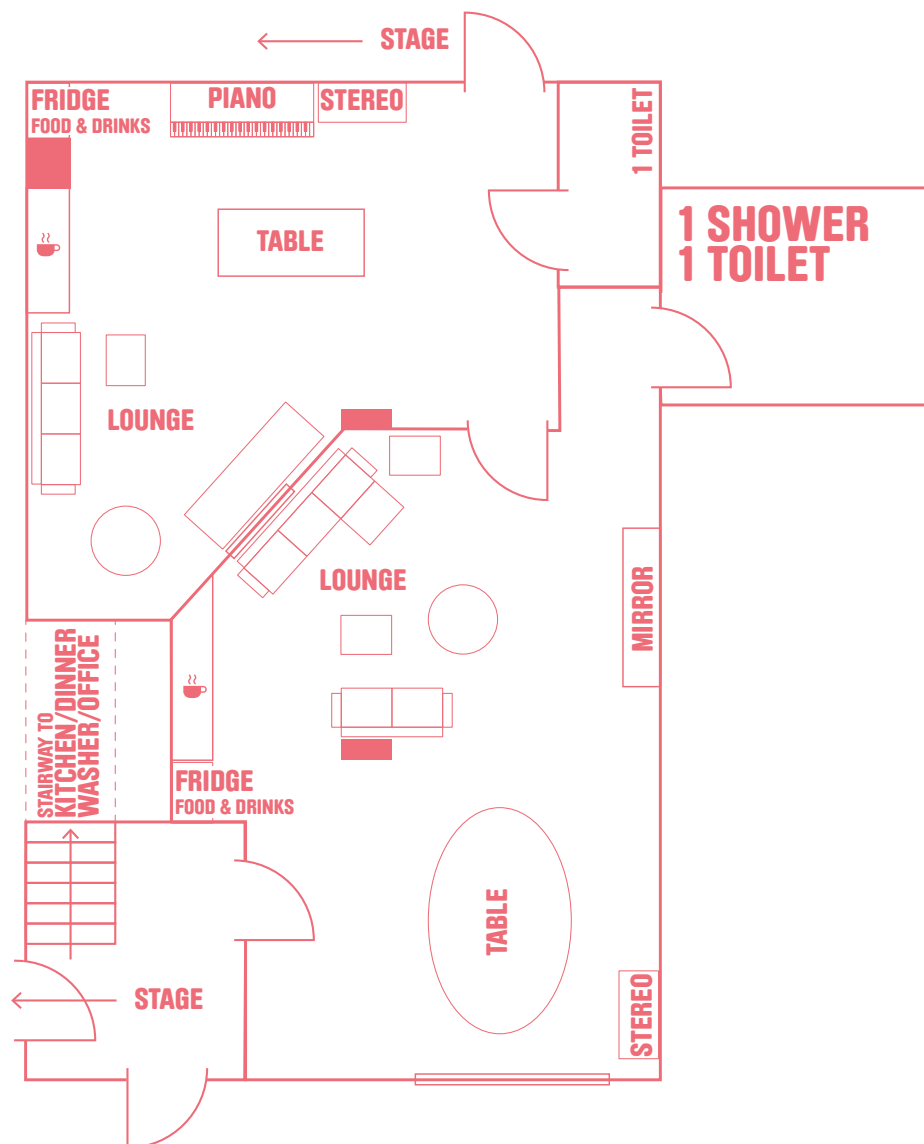


Salzhaus Backstage –
epic pleasure on 90 m²!

WIFI-CONNECTION

WiFi salzhaus_guest

Password salz_guest15



SALZHAUS

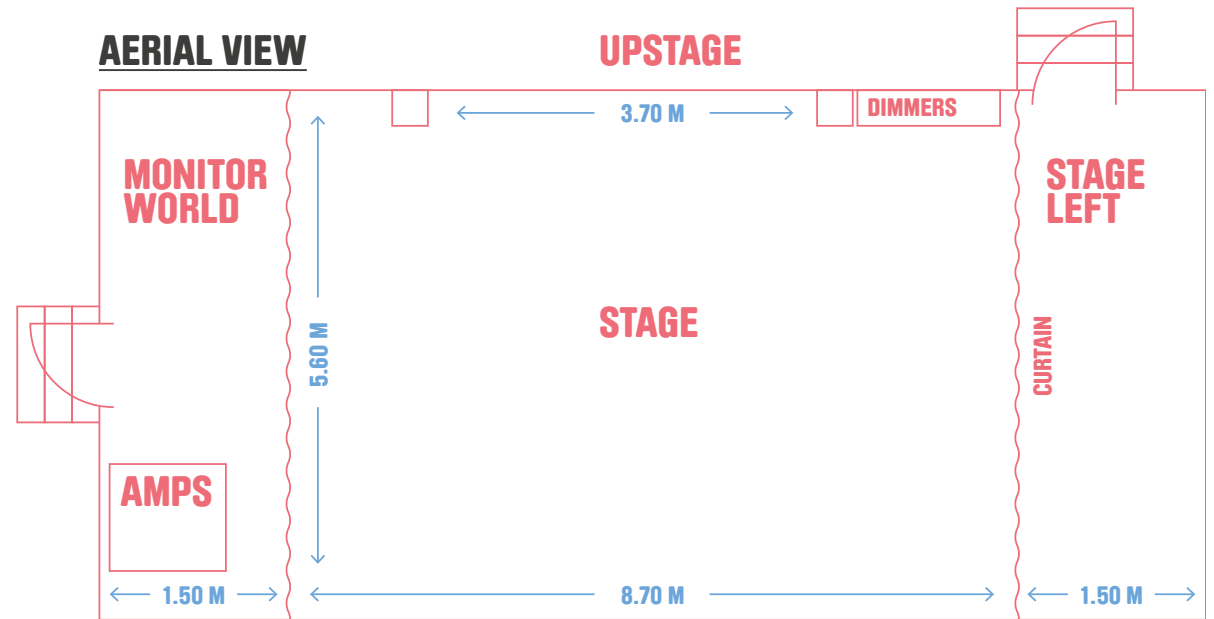
STAGE



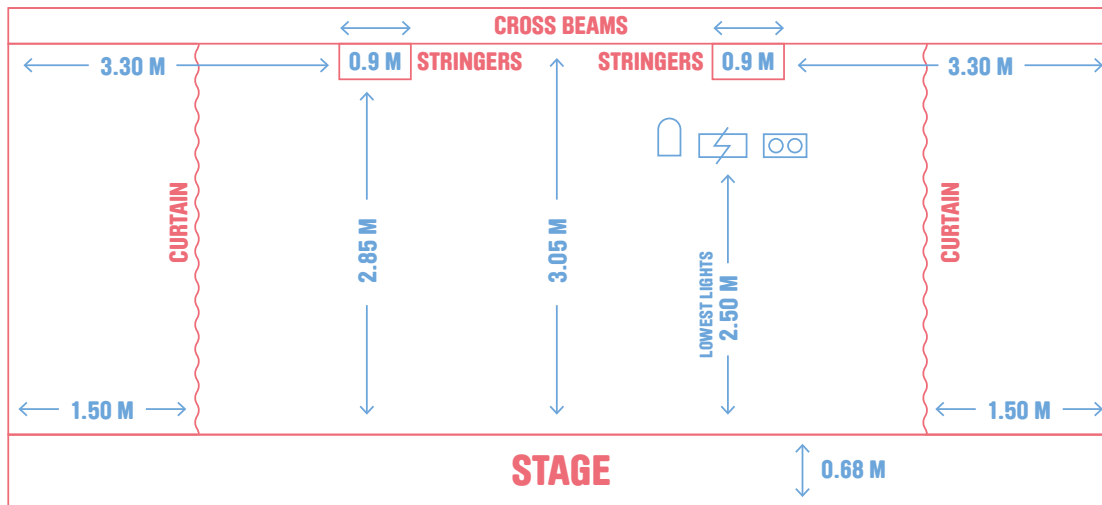
Venue Specs

No trusses. Wooden ceiling with cross beams and stringers.

AERIAL VIEW



DOWNSTAGE VIEW




DOWNSTAGE

SALZHAUS



CAPTION

-  PAR64


-  GLP Impression X4

-  Raylight

-  ACL


-  JB Lighting P7

-  Martin Atomic 3000

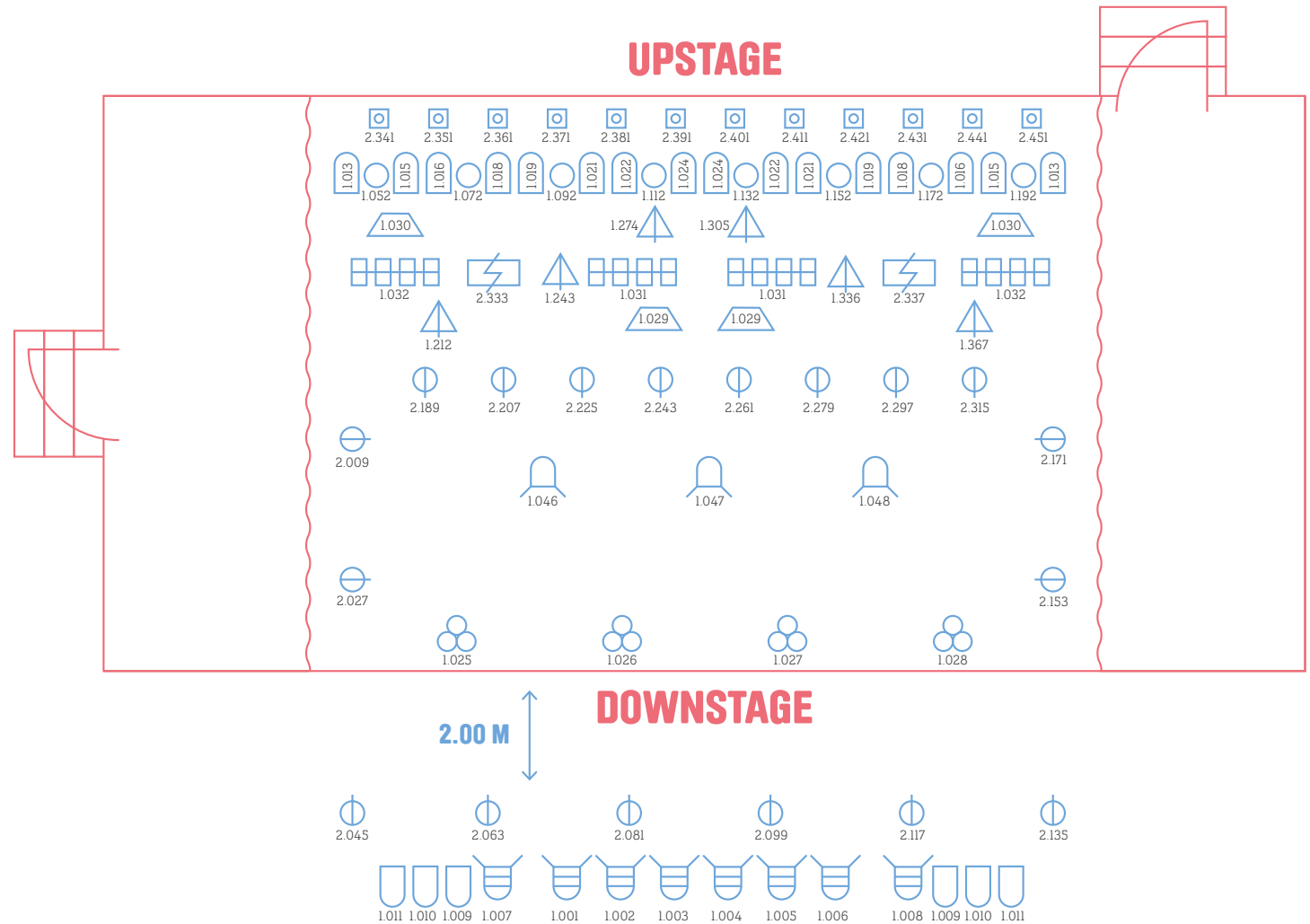
-  GLP Impression X4S (Washer)

-  2Lite Blinder

-  Back: Showtec Active Sunstrip

-  Fresnel 1000W

-  Fresnel 500W



SALZHAUS